

East Rhodes Precinct Demographic Profile

November 2015

Contents

1	Introduction.....	1
2	Age structure	3
3	Culture and Language.....	4
4	Education	5
5	Employment	6
6	Transport	7
7	Households and Dwellings.....	8
8	Socio-Economic Advantage	9
9	Projected Population	10

List of Figures

Figure 1	Location of East Rhodes precinct	1
Figure 2	East Rhodes precinct map identifying the Bureau of Transport Statistics' Travel Zone and Australian Bureau of Statistics' Statistical Area Level 1 (SA1)	2
Figure 3	Population pyramids, 2011	3
Figure 4	Language spoken at home, 2011	4
Figure 5	Level of Education, 2011	5
Figure 6	Main mode of transport to work ⁽¹⁾ in Sydney for employed East Rhodes residents, 2011 ..	7
Figure 7	Registered motor vehicles ⁽¹⁾ for occupied private dwellings, 2011	7
Figure 8	Types of private dwellings, 2011	8
Figure 9	Household types, 2011	8
Figure 10	Average household size, 2011	9
Figure 11	Distribution of dwellings by tenure type, 2011	9
Figure 12	Projected population of Canada Bay LGA, by age group	10

List of tables

Table 1	Population by age group, 2011	3
Table 2	Median Age (years), 2011	3
Table 3	Population by place of birth, 2011.....	4
Table 4	Population with one or both parents born overseas, 2011.....	4
Table 5	Top 10 Countries of birth of people living in East Rhodes precinct, 2011.....	4
Table 6	Top 10 Languages spoken at home in East Rhodes precinct, 2011	5
Table 7	Type of education institution ⁽¹⁾ being attended by student population, 2011.....	5
Table 8	Highest post-school qualification attained for the total population aged 15 years and over, 2011	6
Table 9	Employment status of the population in labour force ⁽¹⁾ , 2011.....	6
Table 10	Top 5 Industries of employment for employed persons living in East Rhodes precinct, 2011	6
Table 11	Share of families experiencing housing stress, 2011	9

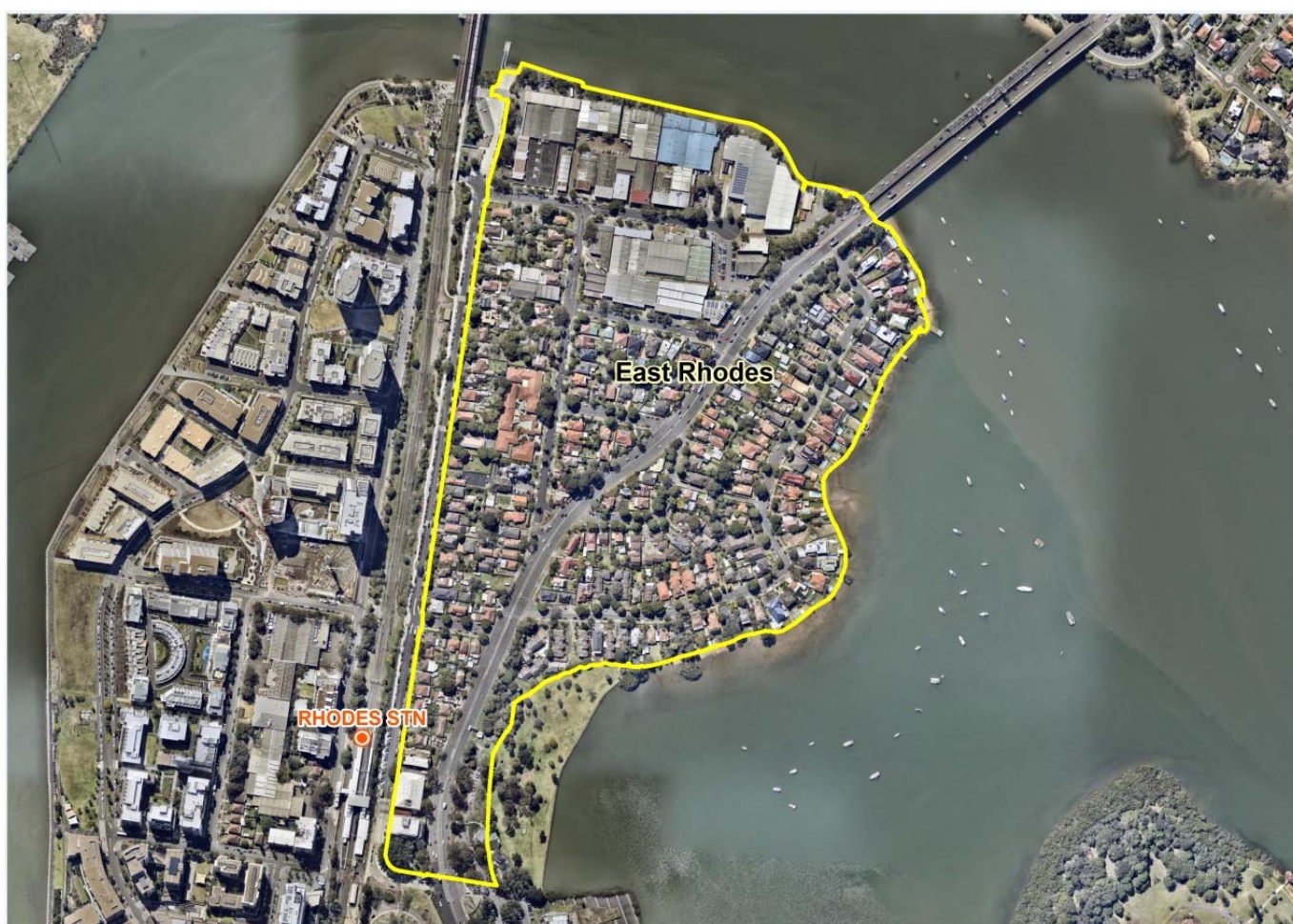
1 Introduction

This profile provides background population statistics to assist in the structure planning of the East Rhodes Urban Activation precinct as defined by NSW Department of Planning and Environment (DP&E). This profile is based on information drawn from the 2011 Census of Population and Housing (ABS) and the 2014 Final NSW and Local Government Area Population, Dwelling and Household Projections (DP&E).

The East Rhodes precinct is part of the suburb of Rhodes in Sydney's Inner West and includes the area adjacent to the Rhodes railway station along the Main Northern Rail Line.

The precinct is located within Canada Bay Local Government Area (LGA).

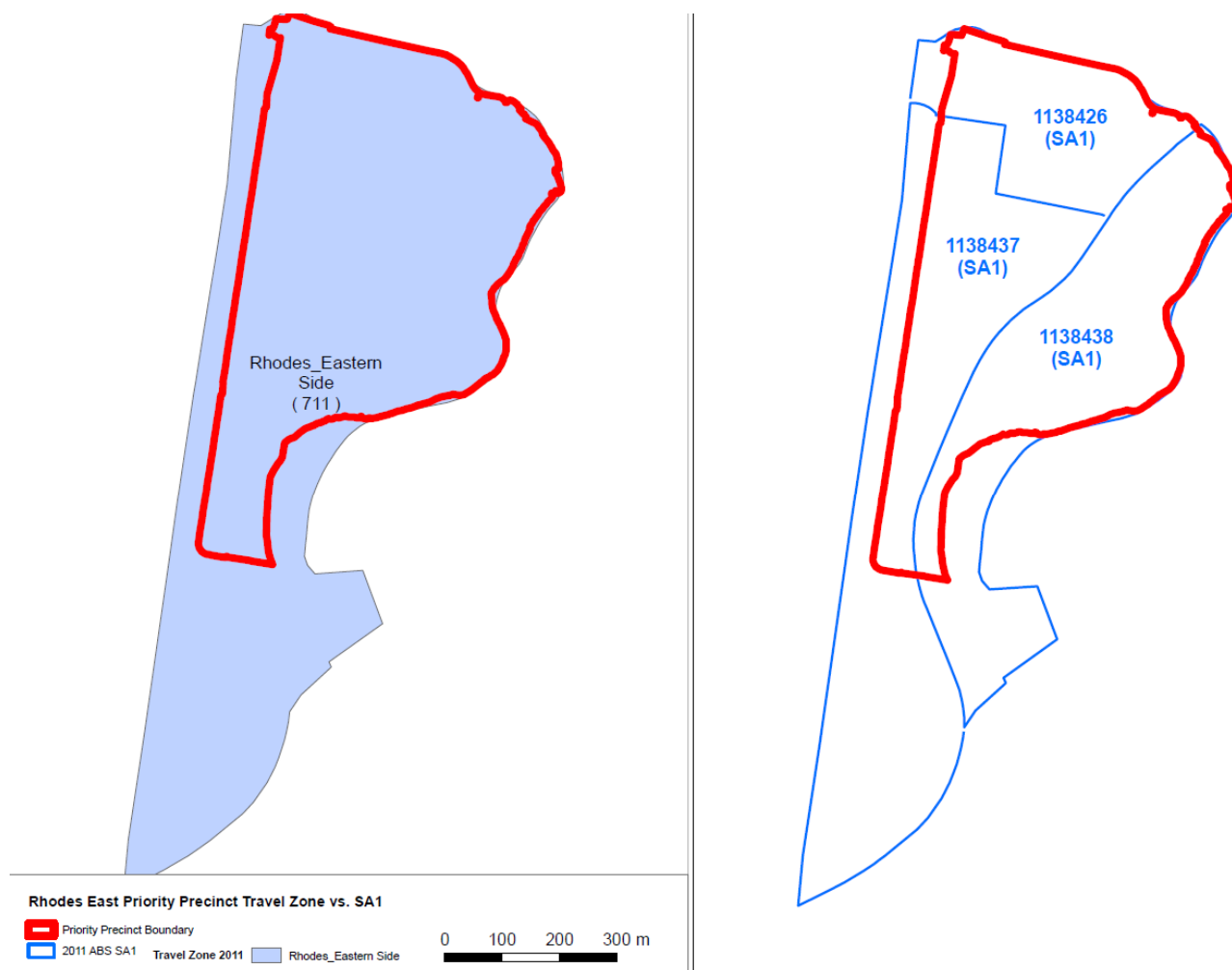
Figure 1 Location of East Rhodes precinct



For the purpose of this analysis:

- the East Rhodes precinct (see Figure 2) refers to the following:
 - Bureau of Transport Statistics (BTS) Travel Zones: 711
 - Australian Bureau of Statistics (ABS) Statistical Areas Level 1 (SA1s): 1138426, 1138437, 1138438
- Canada Bay LGA refers to Canada Bay local government area, as defined on 1 July 2011.
- Sydney refers to the Sydney Metropolitan planning region.

Figure 2 East Rhodes precinct map identifying the Bureau of Transport Statistics' Travel Zone and Australian Bureau of Statistics' Statistical Area Level 1 (SA1)



This profile will provide analysis of the population and dwelling characteristics of the East Rhodes precinct, making comparisons to Canada Bay LGA and Sydney.

2 Age structure

In 2011, the East Rhodes precinct was home to 733 residents, representing just less than one per cent of the entire Canada Bay population. There were smaller proportions of young children, teenagers, and mid-age adults compared to Canada Bay LGA and Sydney as a whole indicating fewer families living in the area (Table 1). A greater share of the precincts' population was aged over 85 years, predominantly female (Figure 3), a reflection of the precincts location which includes two aged care facilities. The median age in the East Rhodes precinct was older compared to Canada Bay LGA and Sydney as a whole (Table 2).

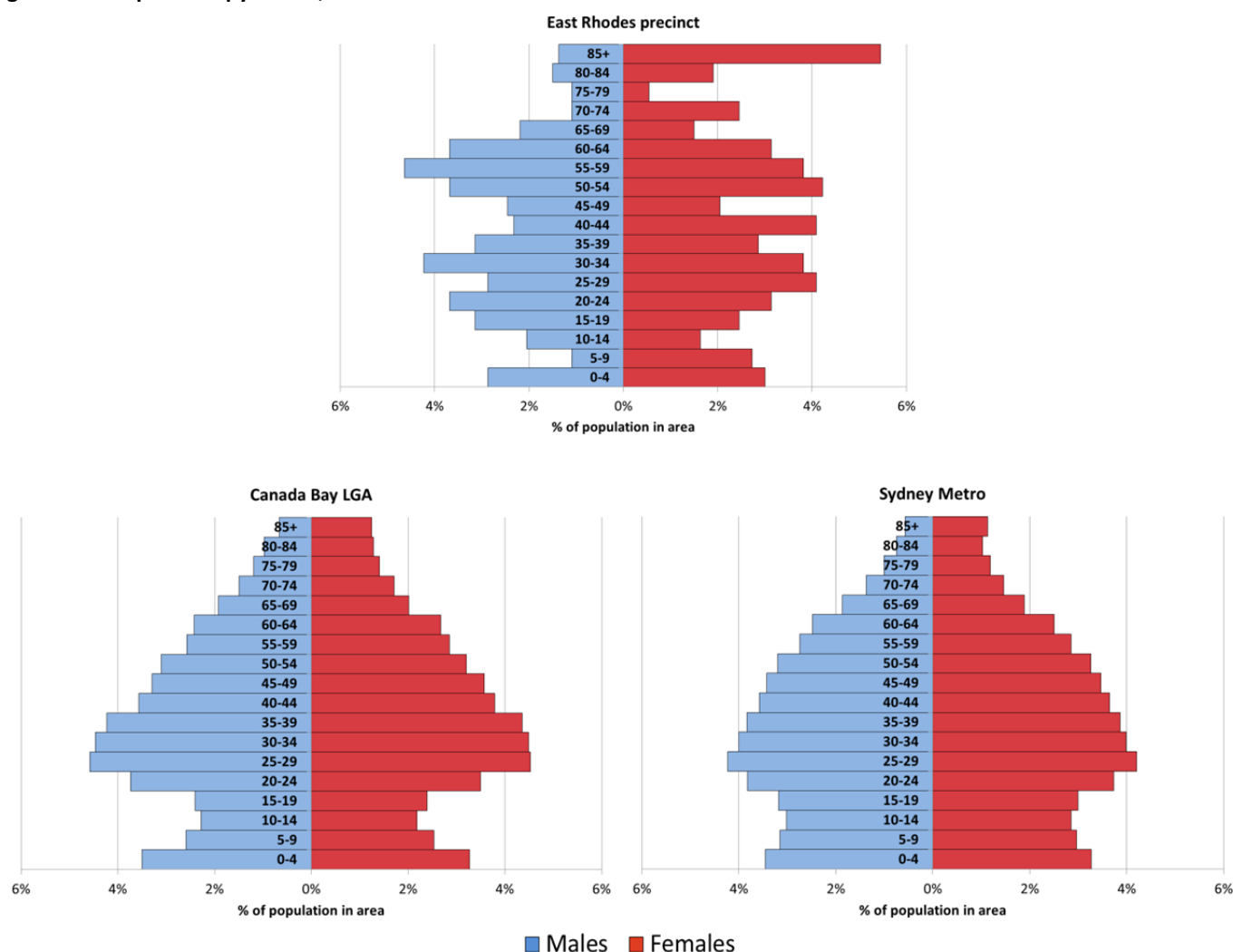
Table 1 Population by age group, 2011

Age Group (years)	Number			Age Distribution (%)		
	East Rhodes precinct	Canada Bay LGA	Sydney	East Rhodes precinct	Canada Bay LGA	Sydney
Under 15	98	13,090	801,837	13.4%	16.3%	18.7%
15-39	245	30,974	1,622,604	33.4%	38.7%	37.9%
40-64	250	24,866	1,336,048	34.1%	31.1%	31.2%
65+	140	11,135	525,728	19.1%	13.9%	12.3%
Total	733	80,065	4,286,217			

Table 2 Median Age (years), 2011

East Rhodes precinct	Canada Bay LGA	Sydney
42.5	37.1	35.7

Figure 3 Population pyramids, 2011



3 Culture and Language

In 2011, 62% of East Rhodes precinct residents were born in Australia, and this was also the case for Canada Bay LGA and Sydney as a whole (Table 3). In total 254 people living in precinct were born overseas. Of these overseas born, China (excludes SARs and Taiwan), Republic of Korea (South) and England were the most common countries of birth (Table 5). Additionally, less precinct residents were the children of migrants compared with Canada Bay LGA and Sydney as a whole (Table 4).

Table 3 Population by place of birth, 2011

Area	Australia	Overseas
East Rhodes precinct	62.0%	38.0%
Canada Bay LGA	62.0%	38.0%
Sydney	62.0%	38.0%

Table 4 Population with one or both parents born overseas, 2011

Area	At least one parent born overseas
East Rhodes precinct	59.8%
Canada Bay LGA	65.4%
Sydney	63.5%

Table 5 Top 10 Countries of birth of people living in East Rhodes precinct, 2011

Rank	Country of birth	Share of population (%)
1.	Australia	62.0%
2.	China (excludes SARs and Taiwan)	6.3%
3.	Korea, Republic of (South)	3.9%
4.	England	3.6%
5.	India	3.1%
6.	New Zealand	1.6%
7.	Egypt	1.3%
8.	Philippines	1.3%
9.	Sri Lanka	1.3%
10.	Ireland	1.2%

In East Rhodes precinct almost two thirds of residents spoke English at home (65%). This is a slightly larger proportion than Canada Bay LGA and Sydney as a whole (Figure 4). Of the people who spoke a language other than English, the share who also spoke English very well (62%) was higher than Canada Bay LGA (57%) and Sydney as a whole (56%).

Many other languages were spoken by residents of the East Rhodes precinct community, reflecting the cultural diversity of the precinct (Table 6).

Figure 4 Language spoken at home, 2011

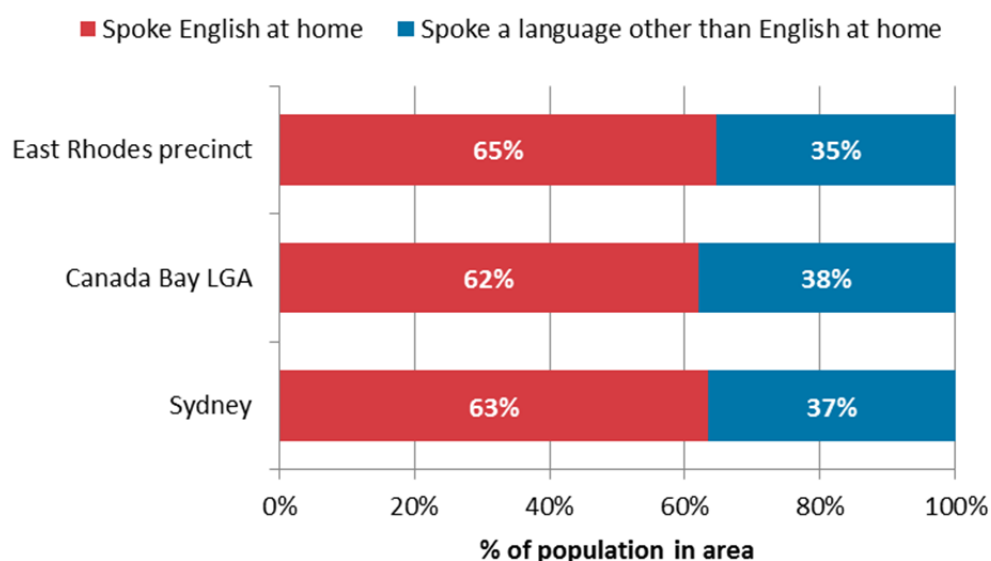


Table 6 Top 10 Languages spoken at home in East Rhodes precinct, 2011

Rank	Language spoken at home	Share of population (%)
1.	English	64.7%
2.	Mandarin	7.5%
3.	Korean	4.0%
4.	Arabic	3.8%
5.	Italian	3.7%
6.	Cantonese	1.8%
7.	Greek	1.5%
8.	Japanese	1.5%
9.	Russian	1.3%
10.	Spanish	1.2%

4 Education

The share of students attending each type of educational institution reflected the age profile of the East Rhodes precinct population. Fewer young families meant a greater share of students attended a tertiary institution (29.1%) or technical or further education (14.6%), whereas a smaller proportion attended preschool (4.6%) or primary school (23.2%) compared to the Canada Bay LGA and the Sydney region (Table 7).

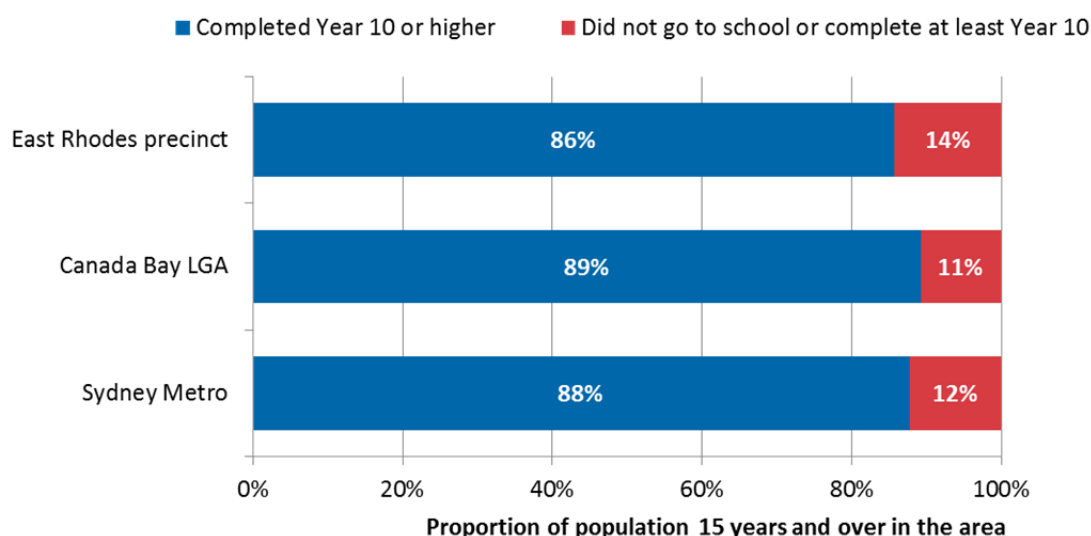
Table 7 Type of education institution⁽¹⁾ being attended by student population, 2011

Area	Preschool	Primary school	Secondary school	Technical or further education institution	Tertiary Institution
East Rhodes precinct	4.6%	23.2%	25.8%	14.6%	29.1%
Canada Bay LGA	7.3%	29.1%	23.1%	8.3%	28.6%
Sydney	7.2%	31.5%	26.0%	9.8%	21.9%

⁽¹⁾Excludes 'other' institutions

Most of the adult population (aged 15 years and over) who lived in East Rhodes precinct had completed at least Year 10 at school (86%). This is only slightly lower than the proportion of residents who completed at least Year 10 in Canada Bay LGA (89%) or Sydney as a whole (88%; Figure 5). Year 12 completions were attained by 66% of East Rhodes precinct residents aged 15 years and over, which is a higher proportion compared to Sydney as a whole (62%) but slightly lower than Canada Bay LGA (68%).

Figure 5 Level of Education, 2011



More than half of the population in East Rhodes precinct aged 15 years and over held a post-school qualification (57.5%), which is higher than Sydney as a whole (54.9%) but lower than Canada Bay LGA (61.6%). The most common post-school qualification attained in the precinct was at the Bachelor Degree level (23.3%), which again was higher than Sydney (19.8%) but slightly lower than Canada Bay LGA (24.9%, Table 8).

Table 8 Highest post-school qualification attained for the total population aged 15 years and over, 2011

Area	Postgraduate Degree Level	Graduate Diploma and Graduate Certificate Level	Bachelor Degree Level	Advanced Diploma and Diploma Level	Certificate Level	No Post-School Qualification
East Rhodes precinct	7.5%	2.1%	23.3%	11.2%	13.3%	42.5%
Canada Bay LGA	9.0%	2.4%	24.9%	11.0%	14.2%	38.4%
Sydney	6.6%	1.8%	19.8%	10.2%	16.4%	45.1%

5 Employment

In 2011, 370 East Rhodes precinct residents were part of the labour force. They represented 63% of the precincts population that were aged 15 years and above—a slightly lower labour force participation rate compared to Sydney as whole (66%) and Canada Bay LGA (69%). The lower labour force participation rate for the precinct, compared to Canada Bay LGA and Sydney, can be partly attributed to the larger proportion of people 65 years and over who have lower participation rates in the workforce. The unemployment rate for East Rhodes precinct (3.0%) was lower than the Sydney region (5.7%, Table 9). Of the employed persons in East Rhodes precinct, just over two thirds (69%) worked full-time.

Table 9 Employment status of the population in labour force⁽¹⁾, 2011

Area	Employed	Unemployed
East Rhodes precinct	97.0%	3.0%
Canada Bay LGA	95.7%	4.3%
Sydney	94.3%	5.7%

⁽¹⁾Labour force only includes persons aged 15 years and over who were either employed or unemployed

Table 10 Top 5 Industries of employment for employed persons living in East Rhodes precinct, 2011

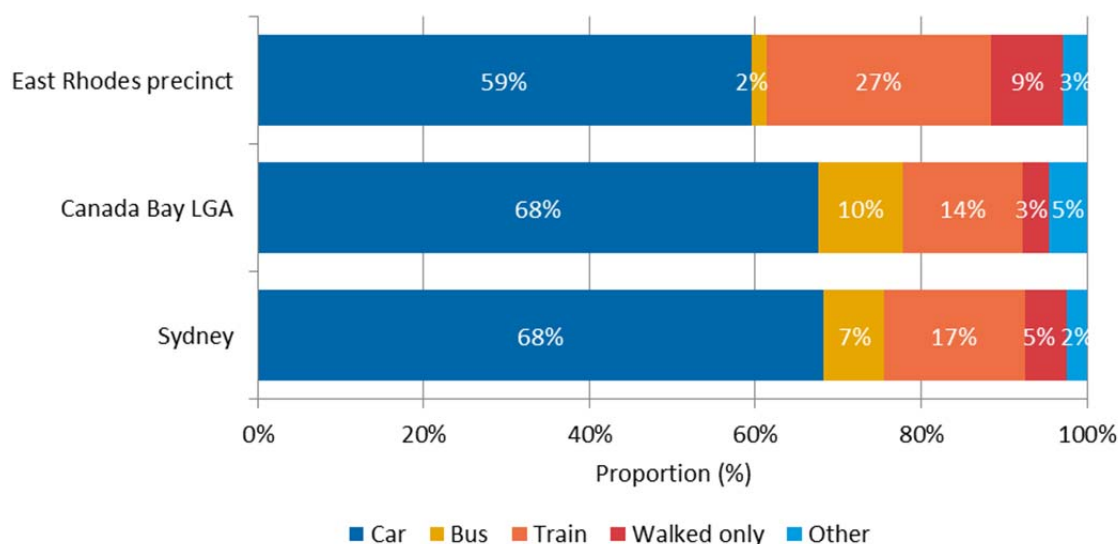
1. Retail Trade (12.2%)
2. Health Care and Social Assistance (11.4%)
3. Professional, Scientific and Technical Services (11.1%)
4. Education and Training (9.9%)
5. Manufacturing (9.6%)

The most common industries of employment for the East Rhodes precinct were Retail Trade (12.2%), Health Care and Social Assistance (11.4%) and Professional, Scientific and Technical Services (11.1%, Table 10). A higher proportion of the employed population were employed in Retail Trade compared to Canada Bay LGA (9.0%) and Sydney as a whole (9.9%), while a similar proportion were employed in Health Care and Social Assistance in Canada Bay LGA (10.4%) and Sydney as a whole (11.0%). The top ranked industries for the precinct as listed in Table 10 are consistent with that of Canada Bay LGA, with the exception of Manufacturing (6.5% in Canada Bay LGA) being replaced by Financial and Insurance Services (9.1% in Canada Bay LGA compared to just 6.7% in East Rhodes precinct).

6 Transport

The most common mode of transport used to travel to work by East Rhodes precinct residents was by car, either as a driver or passenger. Three out of five precinct residents used a car to travel to work, a lower proportion compared to Canada Bay LGA and Sydney (both 68%). Precinct residents were more likely to take the train or walk to work and less likely to take the bus to work. The precinct had a higher proportion of its residents taking the train (27%) compared to Canada Bay LGA (14%) and Sydney overall (17%, Figure 6).

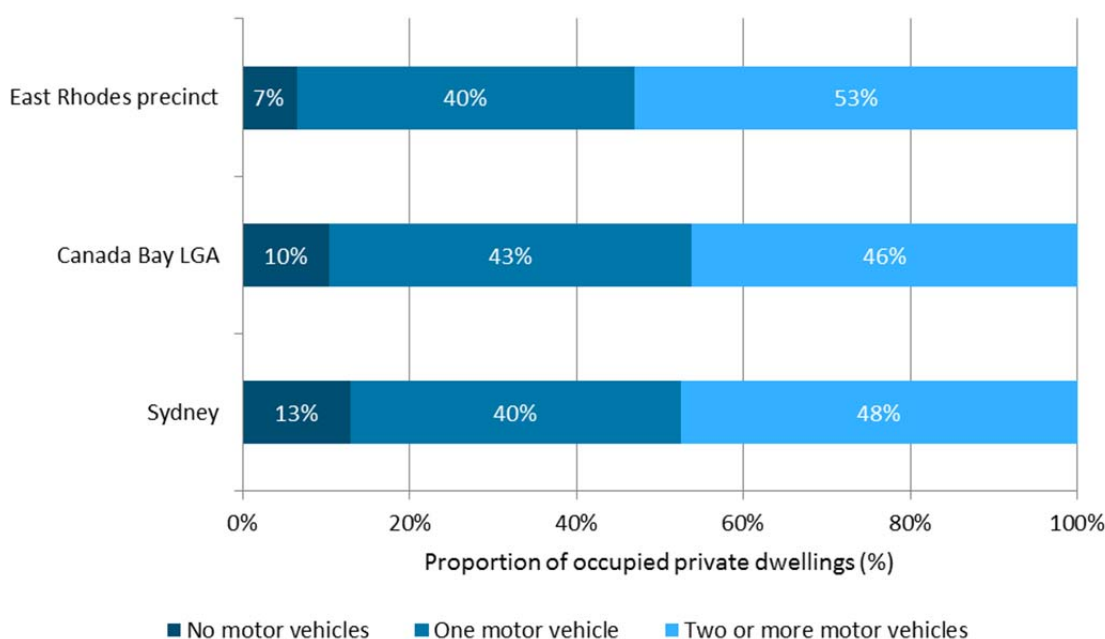
Figure 6 Main mode of transport to work ⁽¹⁾ in Sydney for employed East Rhodes residents, 2011



⁽¹⁾ Excludes persons who worked from home, did not go to work or did not state their mode of transport

In the East Rhodes precinct, 7% of occupied private dwellings did not have any registered motor vehicles garaged or parked at their address – a lower proportion than Canada Bay LGA and Sydney as a whole (Figure 7). Of the dwellings in the precinct which had a registered motor vehicle garaged or parked, more than half had two or more vehicles.

Figure 7 Registered motor vehicles ⁽¹⁾ for occupied private dwellings, 2011

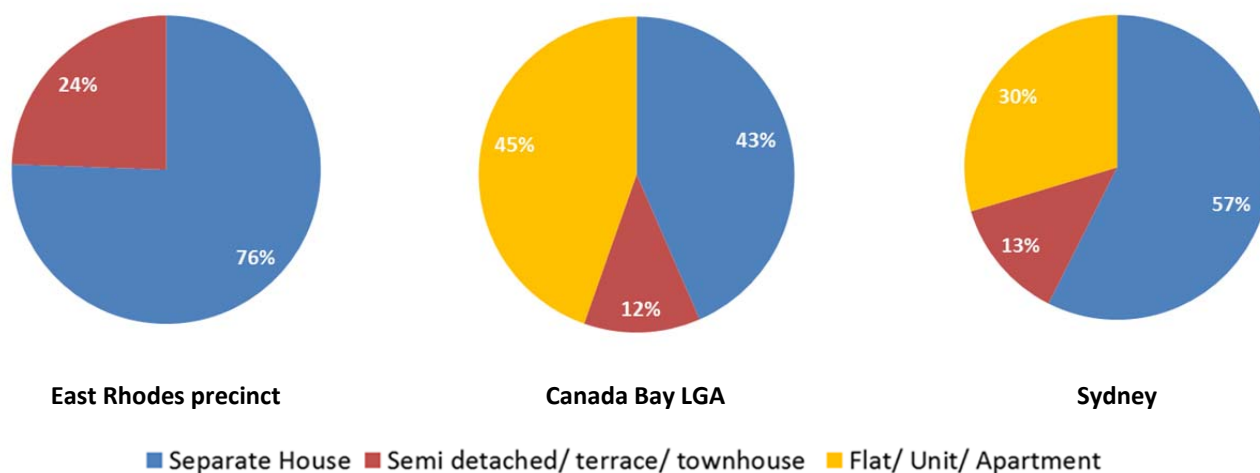


¹Excludes motorbikes and scooters

7 Households and Dwellings

There were 274 private dwellings in the East Rhodes precinct in 2011, representing less than one percent (0.9%) of all private dwellings in Canada Bay LGA. Over three quarters of these dwellings (76%) were separate houses, which was substantially higher compared to Canada Bay LGA (43%, Figure 8). The rest of the private dwellings in the precinct were semi-detached, terraces or townhouses, which represented a greater proportion of medium density residential land use than that seen in Canada Bay LGA and Sydney as a whole (Figure 8). There are no flats, units or apartments in the East Rhodes precinct (Figure 8).

Figure 8 Types of private dwellings, 2011



The 2011 Census data reveals a strong relationship between the predominant household types of an area, the population's age profile and housing stock available. The most common household types, contributing to almost 60% of all households (across the precinct, Canada Bay LGA and Sydney), were families consisting of couples with children and couple only households (Figure 9). The precinct had a lower proportion of lone person households (20%) compared to Canada Bay LGA (23%) and Sydney (22%) and a higher proportion of multiple and other households (8%) compared to Canada Bay LGA and Sydney (4% for both). The average household size of the precinct was 2.67 persons per household, which was similar to Sydney as a whole and higher than Canada Bay LGA (Figure 10).

Figure 9 Household types, 2011

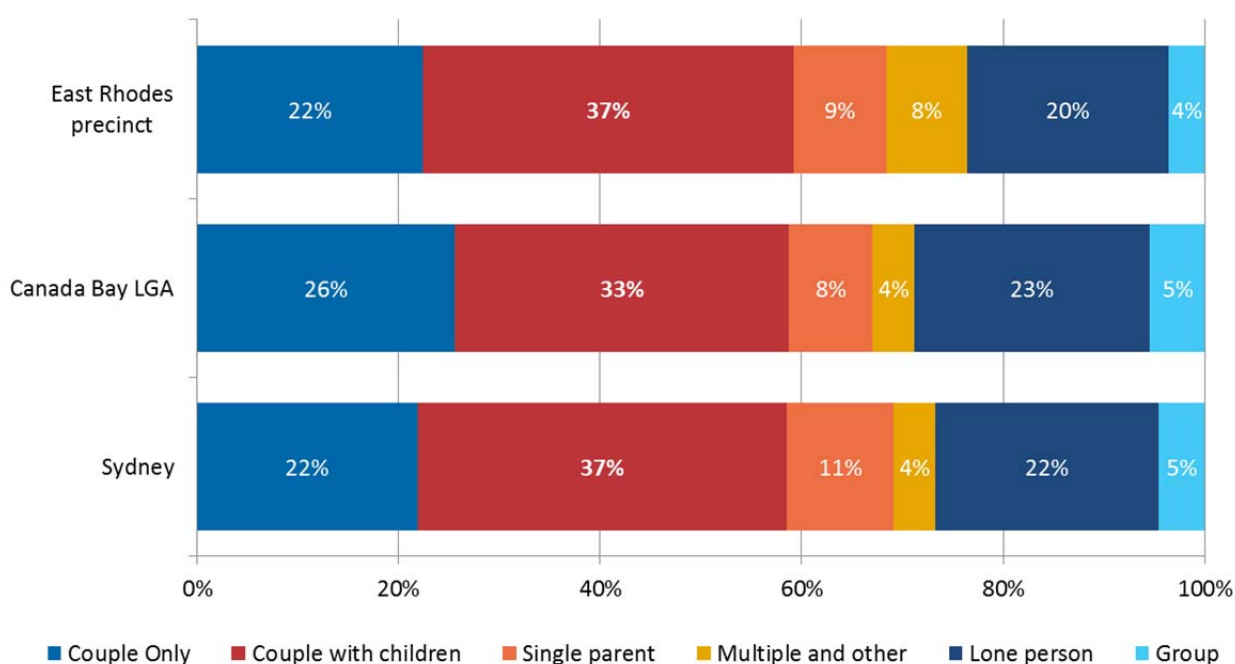
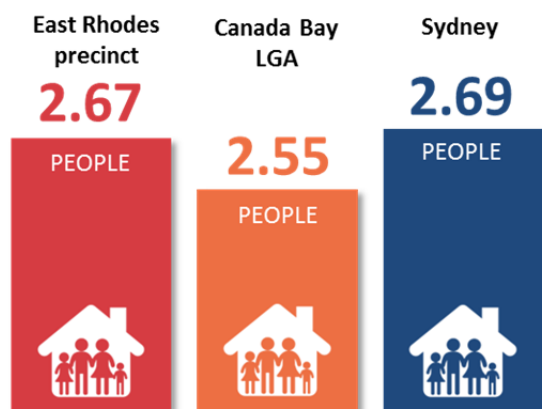
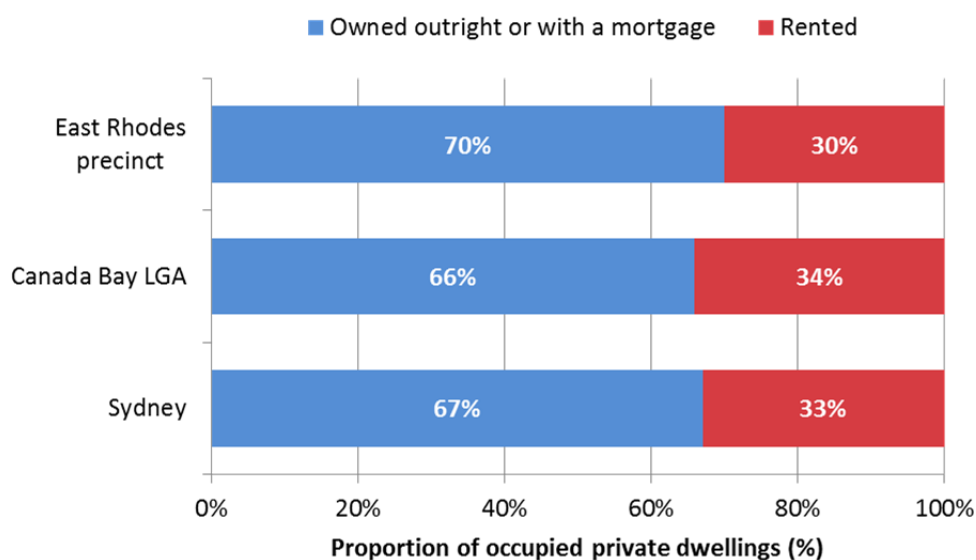


Figure 10 Average household size, 2011



In East Rhodes precinct, 70% of dwellings were owned outright or with a mortgage, which is a higher proportion than for households in other parts of Canada Bay LGA and Sydney (Figure 11).

Figure 11 Distribution of dwellings by tenure type, 2011



8 Socio-Economic Advantage

Slightly more families in the East Rhodes precinct experienced housing stress (that is, when the household has an income level in the bottom 40 per cent of Sydney's income distribution and is paying 30 per cent or more of its income on rent) compared to Sydney as a whole, and significantly more than Canada Bay LGA (Table 11).

Table 11 Share of families experiencing housing stress, 2011

Area	Families experiencing housing stress
East Rhodes precinct	37.3%
Canada Bay LGA	27.2%
Sydney	36.8%

In 2011, the median weekly household income in the East Rhodes precinct was between \$1,500 and \$1,999, which is the same income range as households in Canada Bay LGA, but higher than the Sydney region (\$1,250 - \$1,499).

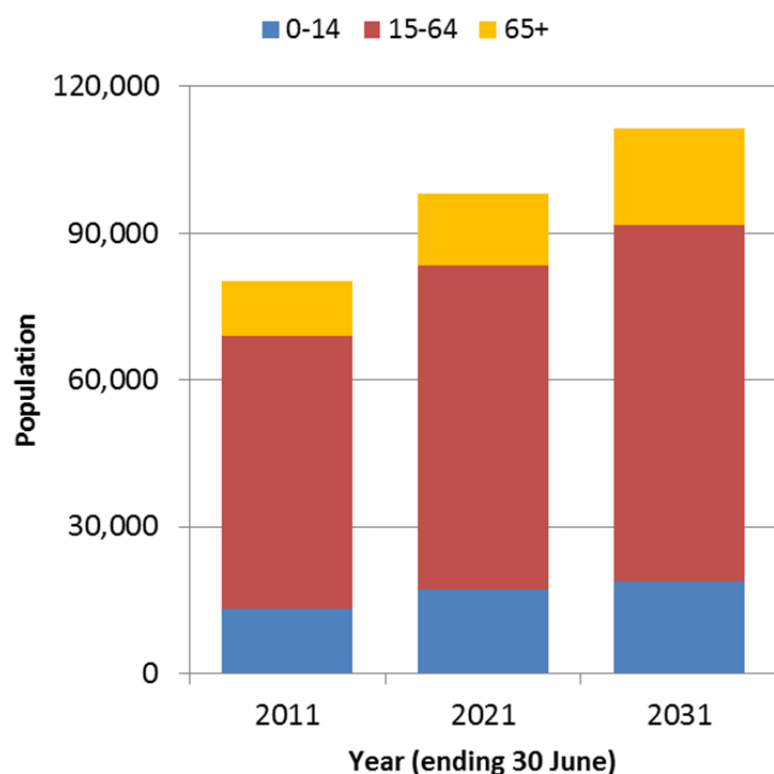
9 Projected Population

As the East Rhodes precinct is located within the Canada Bay LGA, analysing the population projections for Canada Bay LGA can give us an indication of the potential changes to the precincts' population profile over the next 15-20 years. Differences between the precincts' age profile and Canada Bay LGA do however need to be taken into account when analysing these projections.

Canada Bay LGA is expected to grow by 31,300 people over the next 20 years, from 80,050 in 2011 to 111,350 people by 2031. This is a 39% increase, compared to a 37% increase in the population of the Sydney region over the same period. Just over half (54%) of this growth is expected to come from natural increase, with the number of children born in the area likely to outnumber deaths.

Like everywhere else, the population of Canada Bay LGA is ageing. By 2031, there may be 19,750 residents aged 65 years or older in Canada Bay, making up 18% of its population; this older population made up 14% of Canada Bay's population in 2011. This represented a 77% increase in the population 65+ versus 43% and 31% for the 0-14 and 15-64 age groups respectively. Canada Bay is projected to have a more similar age structure to Sydney as a whole by 2031.

Figure 12 Projected population of Canada Bay LGA, by age group



Date prepared: November 2015

Sources:

Australian Bureau of Statistics, 2012, *Census of Population and Housing 2011*, ABS, Canberra.

<http://www.abs.gov.au/websitedbs/censushome.nsf/home/Census>

Bureau of Transport Statistics, 2012, 2011 Journey to Work data, BTS, Sydney, <http://www.bts.nsw.gov.au/Statistics/Statistics>

NSW Department of Planning and Environment, 2014, *2014 NSW and local government area population, housing and dwelling projections*, DP&E, Sydney. <http://www.planning.nsw.gov.au/projections>